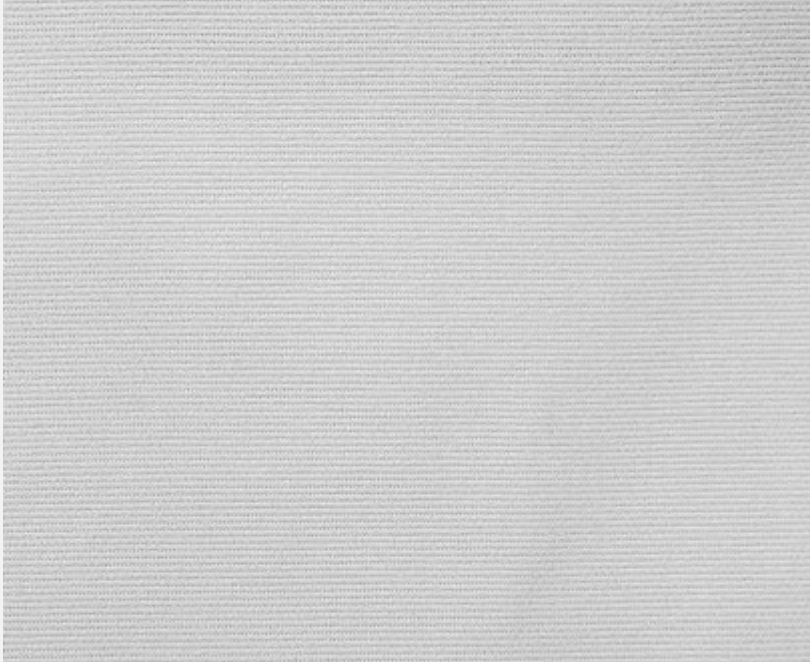


pure<sup>11</sup>-Nr.: 1106001, Marke:

## Eigenschaften



## Empfohlene Reinraumklassen

ISO  
GMP

## Material

- 

## Verpackung

- Box

## Produktvarianten

---

**pure<sup>11</sup>-Nr.: 1106001,**

---

**pure<sup>11</sup>-Nr.: 11060011010WH, Tuch AlphaWipe #TX1004**

Größe: 10 x 10 cm (4 x 4"); Farbe: Weiß / VE: 300STK

---

**pure<sup>11</sup>-Nr.: 11060012323WH, Tuch AlphaWipe #TX1009**

Größe: 23 x 23 cm (9 x 9"); Farbe: Weiß / VE: 150STK

---

**pure<sup>11</sup>-Nr.: 11060013131WH, Tuch AlphaWipe #TX1013**

Größe: 31 x 31 cm (12 x 12"); Farbe: Weiß / VE: 75STK

---

TECHNICAL DATA SHEET

**Performance Characteristics**

Property	Typical Value	Test Method*
<b>Particles and Fibers</b>		
LPC: ≥0.5 µm	8.4 x 10 <sup>6</sup> particles/m <sup>2</sup>	1, TM22
Fibers: >100 µm	2,000 fibers/m <sup>2</sup>	2, TM22
<b>Nonvolatile Residue</b>		
IPA extractant	0.06 g/m <sup>2</sup>	1, TM1
DIW extractant	0.01 g/m <sup>2</sup>	1, TM1
<b>Ions</b>		
Sodium	0.15 ppm	1, TM18
Potassium	0.03 ppm	1, TM18
Chloride	0.10 ppm	1, TM18

**Physical Characteristics**

Property	Typical Value	Test Method*
<b>Absorbency</b>		
Sorptive capacity	530 mL/m <sup>2</sup>	1, TM20
Sorptive rate	<0.3 seconds	1, TM20
<b>Basis Weight</b>	158 g/m <sup>2</sup>	1, TM20

**\*Test Methods**

- 1 – “Evaluating Wiping Materials Used in Cleanroom and Other Controlled Environments,” IEST-RP-CC004.3, Institute for Environmental Sciences and Technology, Rolling Meadows, IL, 2004; [www.iest.org](http://www.iest.org).
- 2 – E2090-12, “Standard Test Method for Size-Differentiated Counting of Particles and Fibers Released from Cleanroom Wipers Using Optical and Scanning Electron Microscopy,” ASTM International, West Conshohocken, PA, 2012; [www.astm.org](http://www.astm.org).

TM – Refers to Texwipe Test Method – available upon request. Contact Texwipe Customer Service at [www.texwipe.com](http://www.texwipe.com) or [info@texwipe.com](mailto:info@texwipe.com) for a copy.

Note: The data in this table represent typical analyses.

**For non-sterile products:**

- TX1034, TX1036, TX1039 – filled using USP grade IPA.
- TX7031 – filled using Semiconductor grade IPA.

**For sterile products:**

- Gamma irradiated to a Sterility Assurance Level of 10<sup>-6</sup> according to AAMI Guidelines.
- Certificates of Compliance, Analysis and Irradiation attached to each case.
- Sterile Validation Documentation available upon request.
- STX1034 – filled using USP grade IPA.

*Texwipe holds ISO 9001 and ISO 14001 registrations.*

*All Texwipe products conform to GHS classification for labeling (where applicable).*

*Shipping classification based on weight of inner package.*

# AlphaWipe®

Dry | Pre-Wetted | Sterile

TECHNICAL DATA SHEET



AlphaWipe®  
100% Polyester

### Products

Number	Description	Sterile	Packaging	Case
<b>Dry Wipers – AlphaWipe®</b>				
<b>SXT1004</b>	4" x 4" (10 cm x 10 cm) dry, sterile	●	50 wipers/bag	50 bags
<b>TX1004*</b>	4" x 4" (10 cm x 10 cm) dry		300 wipers/bag (2 bags of 150 wipers)	20 bags
<b>TX1009*</b>	9" x 9" (23 cm x 23 cm) dry		150 wipers/bag (2 bags of 75 wipers)	10 bags
<b>TX1009B*</b>	9" x 9" (23 cm x 23 cm) dry		150 wipers/bag (2 bags of 75 wipers)	10 bags
<b>TX3211</b>	9" x 9" (23 cm x 23 cm) dry, SterileWipe® LP	●	100 wipers/bag (10 bags of 10 wipers)	5 bags
<b>TX1031*</b>	9" x 32" (23 cm x 81 cm) dry		20 wipers/bag	10 bags
<b>TX1013*</b>	12" x 12" (31 cm x 31 cm) dry		75 wipers/bag double bagged	10 bags
<b>TX1025</b>	24" x 44" (61 cm x 112 cm) dry		25 wipers/bag	3 bags
<b>Pre-Wetted Wipers – AlphaSat®</b>				
<b>STX1034</b>	4" x 4" (10 cm x 10 cm) pre-wetted with 70% IPA, sterile	●	50 wipers/reclosable bag	8 bags
<b>TX1034</b>	4" x 4" (10 cm x 10 cm) pre-wetted with 70% IPA		200 wipers/reclosable bag	4 bags
<b>TX1036</b>	6" x 6" (15 cm x 15 cm) pre-wetted with 70% IPA		75 wipers/reclosable bag	12 bags
<b>TX1039</b>	9" x 9" (23 cm x 23 cm) pre-wetted with 70% IPA		50 wipers/reclosable bag	4 bags
<b>TX7031</b>	9" x 31" (23 cm x 79 cm) pre-wetted with 6% IPA		25 wipers/reclosable bag	4 bags

\*Made in China

TECHNICAL DATA SHEET

### Description

AlphaWipe® is made from 100% polyester material with a cut edge, cleanroom laundered.

Available dry (AlphaWipe®), pre-wetted (AlphaSat®), and sterile.

### Applications

- Wiping and cleaning surfaces, equipment and parts.
- Spill control.
- Applying and removing lubricants, adhesives, residues and other solutions including disinfectants.
- Cleaning with solvents such as isopropyl alcohol (IPA), acetone, and degreasers.
- Cleaning gloves, notebooks, phones or any other item entering the cleanroom.
- Lining trays for holding, protecting, drying and storing of parts, equipment and devices.
- Appropriate for use with temperatures less than 400°F (205°C).

### Industries

Aerospace	Animal Laboratory	Biologics
Cleanroom Design/Build	Compounding Pharmacies	Data Storage
Facilities Maintenance	Industrial	Laboratory
Medical Device	Microelectronics	Pharmaceutical
Printing/Graphics	Semiconductor	USP <797> / USP <800>

### Features & Benefits

- Constructed from 100% polyester creating a high absorbency wiper ideal for spill control, cleaning, and solution application.
- Cleanroom laundered and packaged providing ultra low levels of ions and non volatile residues.
- Designed for use on abrasive surfaces. This wiper will not easily snag or abrade releasing particles and fibers into the process or environment.
- Excellent chemical resistance for compatibility with a variety of solutions.
- Meets USP <797> and USP <800> wiper requirements.
- Autoclave safe (dry wipe).
- AlphaSat® products are pre-wet with 0.2 µm filtered 70% IPA / 30% DIW or 6% IPA / 94% DIW for ease of use
- AlphaSat® wipers provide a consistent, optimized cleaning efficiency with repeatable wetness VOC levels.
- AlphaSat® pre-wetted wipers are packaged in easy-to-use, reclosable slider bags, reducing solution evaporation that preserves the consistent wiper wetness level.
- Individually lot coded for ease of traceability and quality control.

### Cleanroom Environment

- ISO Class 4 – 8
- Class 10 – 100,000
- EU Grade A – D

### Shelf Life

- Non-Sterile (Dry) – 5 years from date of manufacture
- Non-Sterile (Pre-Wetted) – 3 years from date of manufacture
- Sterile (Dry & Pre-Wetted) – 3 years from the date of manufacture

Custom products available upon request.